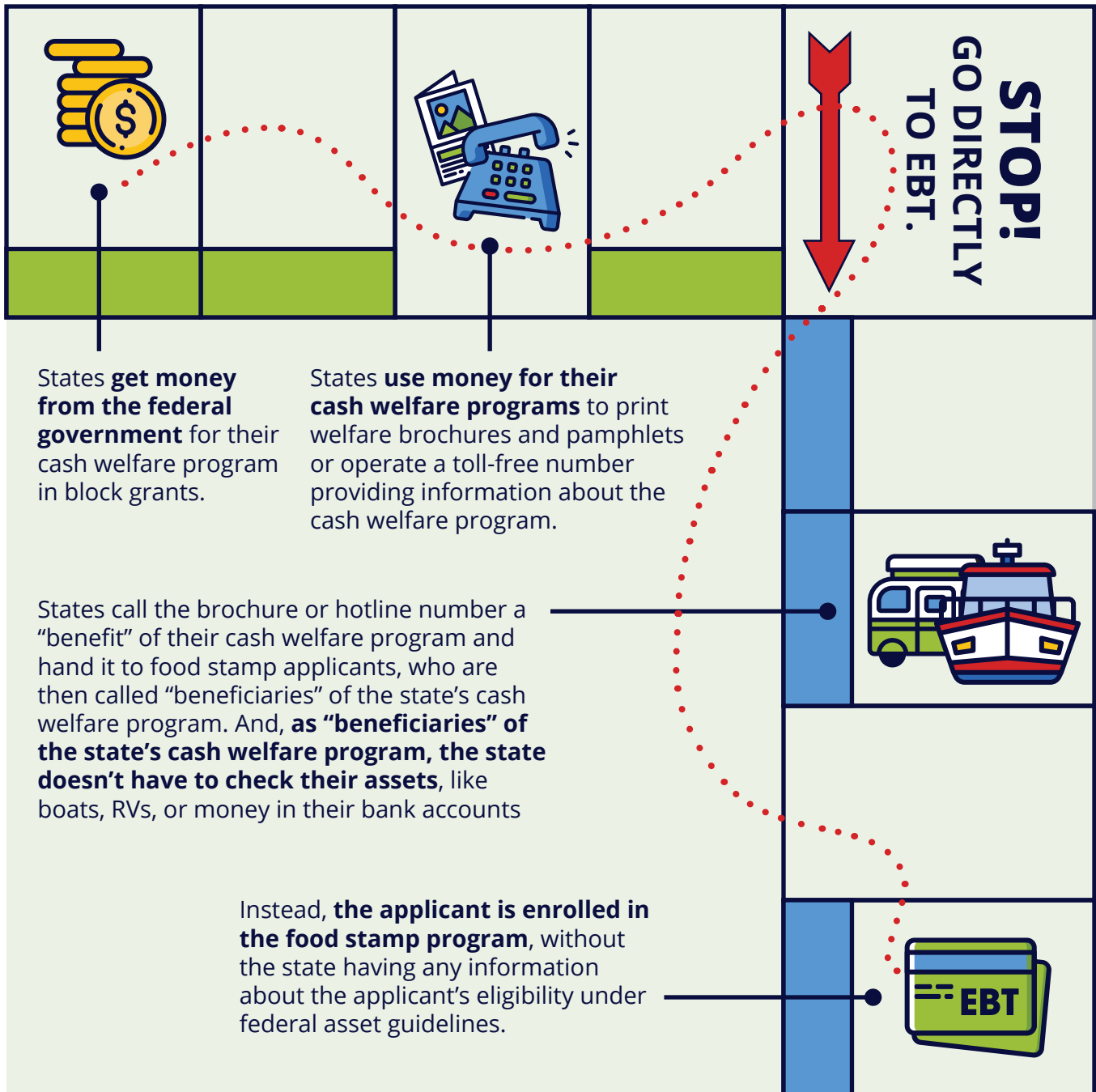




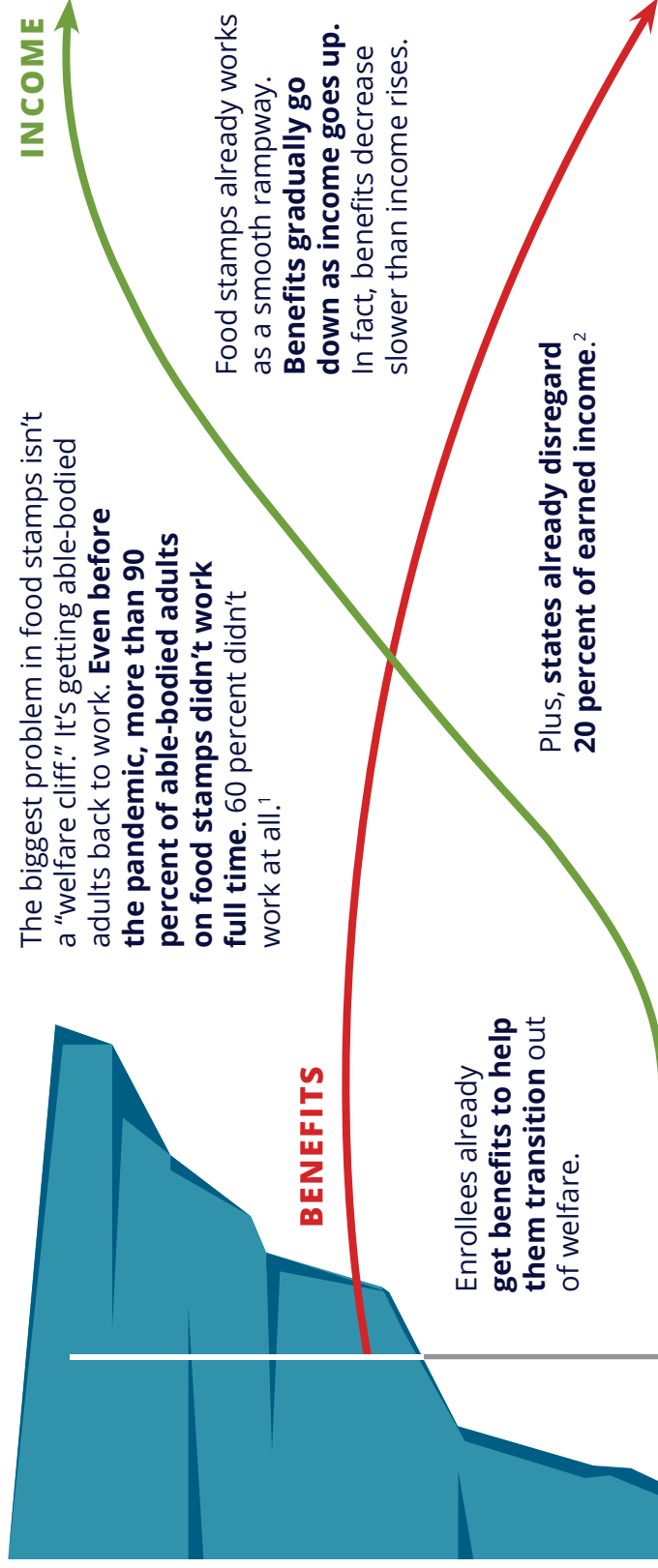
# BBCE in the Real World

## How the Broad-Based Categorical Eligibility Loophole Works and Keeps More Americans Stuck in Dependency



**Thanks to BBCE, there are millions of food stamp enrollees who do not meet federal eligibility rules.** Closing the BBCE loophole would save taxpayers millions of dollars every year, get more able-bodied Americans back to work, and protect resources for the truly needy.

# FGA BBCE in the Real World



## BOTTOM LINE:

The "welfare cliff" is a myth. By gutting asset checks, BBCE is a problem, not a solution. It increases enrollment, decreases incentives for work, and traps more people in welfare.

### SOURCES

1. Jonathan Ingram and Sam Adolphsen, "Three Myths About the Welfare Cliff," Foundation for Government Accountability (2018). <https://thefga.org/paper/three-myths-welfare-cliff/>.
2. 7 USCS § 2014(e)(2). <https://www.govinfo.gov/app/details/USCODE-2010-title7/USCODE-2010-title7-chap51-sec2014>.